



CARE INSTRUCTIONS



---

## SOLID CRAFTSMANSHIP – MADE IN GERMANY

Jörger fixtures are crafted from finest grade, special alloy brass. The brass is cast into blanks which are then formed and polished by hand. Only after many precise procedures and strict quality controls, does each piece obtain its finish in the electroplating or the paint shop. Only then we will pass the product - carefully packaged - on to you.

## HIGH PERFORMANCE AND EXCLUSIVE DESIGN

Our products combine technical perfection with exclusive design. The accessories especially fitted for every Jörger design series allow you to create an individual and harmonious decor for your bathroom. For more than 100 years, we have taken pride in our careful manufacturing and finishing combined with individual design to make unique products for your bath.

## LONG LASTING BEAUTY – THE RIGHT CARE

Daily, pat the fixture dry with a soft cloth after each use – this is the single most important care you can give any finish! Immediately remove any residues of personal care products with clear water. Only use detergents that are specifically intended for this area, such as neutral liquid soap or weak non-alcohol detergent-water solution. The cleaning product should be applied or sprayed onto a cloth or sponge, never directly on the surface. Follow the manufacturer's instructions and do not mix cleaning products.

Avoid all cleaning products that contain abrasive, corrosive, ammonia, acid, bleach and alcohol (for example based on hydrochloric, formic, acetic or phosphoric acid or chlorine bleaching) as well as dry dusters or sponges with an abradant coating.

## APPLY PROTECTIVE COATING REGULARY

Protect painted and galvanized surfaces (e.g. gold, platinum or chrome) by applying a thin layer of liquid wax without polishing additives – slightly sprayed, but not rubbed. The protective film promotes and preserves the surface shine. Do not use this treatment on matt finishes.

---

---

## REMOVING SCALE DEPOSITS

Hard water deposits and dirt in aerators and showerheads can be easily removed. Gently loosen the aerator with a wrench. Tap out the sieves and then place in a vinegar bath for a few minutes. Vinegar is a mild acid which will harm the finish with prolonged contact. Rinse thoroughly in running water. Almost all showers are equipped with an anticalcareous system: deposits dissipate when wiping over the nubs. Clean showerhead sieves may also be cleaned in a mild soap and water solution. Lime scale can be removed by soaking sieves in a 10% vinegar solution at room temperature for 2-5 hours. Afterwards, rinse thoroughly in running water.

## MAINTENANCE

Be sure to activate all angle and concealed gate valves every three months. Work all thermostats through the whole temperature range with taps fully opened to keep the regulating capsule in good working order. Do not dismantle the thermostat, but have the entire system checked by a professional plumber once a year.

---

## Surfaces and finishes

---



CHROME (.000)

Time tested polished Chrome is the hardest of all finishes. To protect the polished surface against corrosion the first step in the electroplating process is a layer of nickel. After that a layer of chrome is applied. Use Simichrome to clean the finish and Flitz Wax to protect the finish from spotting.



MINK (.095)

Mink is an electroplated surface, which makes the product appear in an elegant anthracite. Just as hard as chrome, it is comparably resistant to chemical cleaning agents and equally resistant to tarnishing. To protect the polished surface against corrosion the first step in the electroplating process is also a layer of nickel. Clean with soft soap and water and avoid rubbing the surface with anything other than a soft cloth. Use Flitz Wax to protect the finish from spotting.



MINK MATT (.096)

The same procedure as Mink finish, but the surface is then brushed to give it a sumptuous matt look. Clean with soft soap and water and avoid rubbing the surface with anything other than a soft cloth. Lightly apply a spray on wax and avoid buffing. Pat the wax off rather than shine the surface.



## BRONZE (.011)

Unlike all the other electroplated surfaces, the Bronze colour is achieved by a process of dipping the brass parts in a special bath with alkaline fluid. This process turns the brass components to a dark brown colour. Then it is brushed by hand to turn it into a unique item. Finally a powder coating is applied for durability and to seal the surface with a satin finish. Use soft soap and water for cleaning, never use abrasives or Softscrub. Apply wax as needed and always wipe dry after use to avoid spotting.



## PLATINUM (.065)

The colour of Platinum is very similar to Polished Nickel. Nickel is applied first, but because Nickel is not a permanent finish, we cover the surface with Platinum. Platinum is very exclusive and very resistant to corrosion and shows high abrasion resistance. Clean with Simichrome and wax the surface with Flitz Wax to avoid spotting.



## PLATINUM MATT (.066)

The same procedure used to create Platinum is used to create Platinum Matt, but brushed by hand to achieve the matt finish. Because of this hand prepared process, each item is unique. Clean with soft soap and water and avoid rubbing the surface with anything other than a soft cloth. Lightly apply a spray on wax and avoid buffing. Pat the wax off rather than shine the surface.

## Surfaces and finishes

---



### SUNSHINE (.040)

On top of the basic layer of Nickel a 18 carat Gold plating follows. Included in the Gold alloy is "Indium". Indium gives the surface more stability and hardness in comparison to Gold. Clean with soft soap and water and avoid rubbing the surface with anything other than a soft cloth. Lightly apply a spray on wax and avoid buffing. Pat the wax off rather than shine the surface. This is a living finish with no warranty.



### SUNSHINE MATT (.041)

The same procedure as Sunshine finish, but the surface is then brushed to give it a sumptuous mat look. Clean with soft soap and water and avoid rubbing the surface with anything other than a soft cloth. Lightly apply a spray on wax and avoid buffing. Pat the wax off rather than shine the surface. This is a living finish with no warranty.



### GOLD (.020)

On top of the basic layer of Nickel a 24 karat Gold plating is applied. The world still considers Gold to be the most luxurious of all finishes. Due to the properties of Gold being malleable, clean with soft soap and water, and avoid rubbing the surface with anything other than a soft cloth. Lightly apply a spray on wax and avoid buffing. Pat the wax off rather than rub the surface. This is a living finish with no warranty.



GOLD MATT (.021)

Gold matt is a galvanised surface, the finish resulting from 23-carat gold plating applied to a nickel base layer. The alloy components harden the surface with a yellow tint that is stronger than the one found in fine gold. The surface is then hand-brushed before electroplating with gold giving it its precious matt shade. Clean with soft soap and water and avoid rubbing the surface with anything other than a soft cloth. Lightly apply a spray on wax and avoid buffing. Pat the wax off rather than shine the surface. This is a living finish with no warranty.



ANTIQUÉ GOLD (.025)

After the 24-carat Gold plating, an additional process is applied with silver ingredients that let the product turn completely bluish. It is then polished by hand. After polishing, the blue colour only remains in the deeper recesses of the product. Clean with soft soap and water and avoid rubbing the surface with anything other than a soft cloth. Lightly apply a spray on wax and avoid buffing. Pat the wax off rather than shine the surface. This is a living finish with no warranty and only available for the collection CRONOS and APHRODITE.

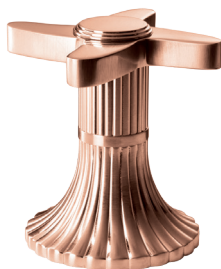


ROSE GOLD (.022)

Rose gold is a particularly noble variety of gold. To protect against corrosion, a galvanic nickel layer of 12 µm is first applied here and then galvanized with an alloy of 18 carat gold and copper. The thickness of the layer and the utmost care taken during the process determine the degree of durability of the coating. An additional layer of clear lacquer protects the sensitive rose gold surfaces from small scratches, external damage and abrasion and, above all, prevents discoloration from oxidation. Use soft soap and water for cleaning, never use abrasives or Softscrub. Apply wax as needed and always wipe dry after use to avoid spotting.

## Surfaces and finishes

---



ROSE GOLD MATT (.023)

Rose gold matt is a very noble variety of red gold. To protect against corrosion, a galvanic nickel layer of 12 µm is applied first and then galvanized with an alloy of 18 carat gold and copper. Rose gold matt, however, is brushed by hand, thereby lending the surface its precious, matt tone. It also receives an additional clear lacquer layer, which protects the sensitive surface from small scratches, external damage and abrasion and, above all, prevents discoloration through oxidation. Use soft soap and water for cleaning, never use abrasives or Softscrub. Apply wax as needed and always wipe dry after use to avoid spotting.



POLISHED NICKEL (.035)

Polished nickel has a very pleasant effect due to its warm mirror reflections and is ideal as a finish for the bathroom. The nickel coating, which is about twice as thick, serves not only as an excellent corrosion layer, but also supports a long service life. As nickel tarnishes, it is recommended to wipe and clean it regularly to maintain its shine. It is recommended to pat the surface dry after use to avoid hard water stains. It can be cleaned with liquid soap and water or a 50/50 solution of water and light vinegar. Do not let the vinegar solution soak in, but rinse with sufficient water. Stubborn dirt can be removed with the Simichrome polish. In addition, a wax will protect the surface against staining.



SATIN NICKEL (.036)

The manufacturing process is basically the same as for the polished nickel surface. However, satin nickel is brushed by hand (and not polished) so that the surface gets its precious, matt tone. Clean this surface with neutral soap and water. Use only a soft cloth for this. Wax - lightly sprayed on but not rubbed in - protects the surface. Pat the surface dry rather than rubbing.





## MATT WHITE (.052)

Matt white is a very high-quality powder coating by which the taps and accessories are cleaned and pre-treated in order to then apply the powder to the electrically conductive surface. The powder is then burned into the surface at temperatures of up to 480 °F. The heat causes the structures of the paint powder and the surface to cross-link, resulting in a resistant, durable and very attractive coating that also has protective properties. Use soft soap and water for cleaning, never use abrasives or Softscrub. Apply wax as needed and always wipe dry after use to avoid spotting.



## MATT BLACK (.092)

Matt black is a very high-quality powder coating by which the taps and accessories are cleaned and pre-treated in order to then apply the powder to the electrically conductive surface. The powder is then burned into the surface at temperatures of up to 482 °F. The heat causes the structures of the paint powder and the surface to cross-link, which resulting in a resistant, durable and very attractive coating that also has protective properties. Use soft soap and water for cleaning, never use abrasives or Softscrub. Apply wax as needed and always wipe dry after use to avoid spotting.

## Natural stones and gemstones

---



### WHITE TURQUOISE (-51)

Geologically, it is one the youngest and rarest type of stone in the world, an agglomerate of strong opaque white, crossed by grey or black veins and with a matte surface finish. White turquoise is classified in gemstone class 3. Origin: USA.

The hardness of the stone is 5 - 6 on the Mohs scale.

The stone is polished, coated with a thin protective layer to prevent discolourations, and set in metal. It is recommended not come into contact with strong acids and alkalis.

Always clean with pure water and a soft cloth and make sure to keep the surface dry at all times.



### BLACK MARBLE (-52)

A rare stone of volcanic origin, popularly used for decoration or cladding since ancient times. In this marble, the black colour is created by mixing graphite and bitumen. Marble is popular in bathrooms because of its colourful pattern and depth of colour.

Origin: China, Guangxi. Mohs hardness: 3.

The stone is polished, coated with a thin protective layer to prevent discolourations, and set in metal. It is recommended not come into contact with strong acids and alkalis.

Always clean with pure water and a soft cloth and make sure to keep the surface dry at all times.



### AMETHYST (-53)

Amethyst fascinates with its slightly varying colouration depending on the incidence of light and an irregular surface structure.

Origin: Madagascar. Mohs hardness: 7. Diamond 10.

The stone is polished, coated with a thin protective layer to prevent discolourations, and set in metal. The stone can lose its colour when exposed to elevated temperatures; at 392 °F, the amethyst's colour will fade strongly. It is recommended that Amethyst not come into contact with strong acids and alkalis.

Always clean with pure water and a soft cloth and make sure to keep the surface dry at all times.



## MALACHITE (-54)

A gemstone in an amazingly strong green colouring with a moiré pattern. The precious stone owes its beauty to its copper content and the vagaries of geological processes. It is susceptible to cracking and must therefore be protected from sudden shocks and temperature fluctuations.

Origin: Zambia. Mohs-scale hardness: 6.

The stone is polished, coated with a thin protective layer to prevent discolourations, and set in metal. It is recommended that Malachite not come into contact with strong acids and alkalis. Always clean with pure water and a soft cloth and make sure to keep the surface dry at all times.



## LABRADORITE (-55)

This gemstone is named after the Canadian island where the first large deposit of the mineral was found. The stone is characterised by its greenish-grey colouring, its deep three-dimensional appearance and its iridescent colouring due to the double refraction of the light.

Origin: Canada. Mohs-scale hardness: 6.

The stone is polished, coated with a thin protective layer to prevent discolourations, and set in metal. It is recommended that Labradorite not come into contact with strong acids and alkalis. Always clean with pure water and a soft cloth and make sure to keep the surface dry at all times.



## AVENTURINE BLUE (-56)

A decorative stone presenting many colour variations from deep brown to pink. The characteristic sparkling gold hue of aventurine are due to inclusions of mica, goethite and hematite platelets, as well as cracks filled with iron hydroxides. From the colourful palette of aventurine's colours, blue is the rarest.

Origin: India. Mohs-scale hardness: 6 - 7.

The stone is polished, coated with a thin protective layer to prevent discolourations, and set in metal. It is recommended that the stone Aventurine blue not come into contact with strong acids and alkalis. Always clean with pure water and a soft cloth and make sure to keep the surface dry at all times.

## Natural stones and gemstones

---



### PALISSANDRO BLUE (-60)

Very rare, multi-coloured marble mined only in a single quarry in Northern Italy. The stone has a pearly-grey to pearly blue surface shot through with beige-golden, graphite-grey, peach, or pink veins. Palissandro marble is extraordinarily resilient, resistant to external influences, and will absorb only little moisture. This makes it outstandingly suitable for use in the bathroom.

Origin: Northern Italy. Mohs hardness: 3.

The stone is hand-cut, polished, and coated in a transparent protective layer. Palissandro Blue should not get into contact with any strong acids or alkalis. Always clean it with pure water and a soft rag.

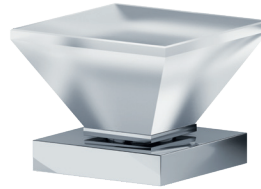
## Crystals & Porcelain

---



### CRYSTAL HANDLES

With proper care, the faceted crystals retain their shine and purity for years. Clean the crystals with a mild detergent diluted in water. Do not use extreme hot water as this can cloud the crystals. Gently wipe the crystals from the base of the handle with a soft cloth. Rinse the crystal handles thoroughly with lukewarm water and pat them dry with a soft cloth. Do not use kitchen or microfiber towels, as fine dust particles can mechanically damage the crystal surface. It is strictly forbidden to use detergents for windows and mirrors.



### CRYSTAL HANDLES

With proper care, the faceted crystals retain their shine and purity for years. Clean the crystals with a mild detergent diluted in water. Do not use extreme hot water as this can cloud the crystals. Gently wipe the crystals from the base of the handle with a soft cloth. Rinse the crystal handles thoroughly with lukewarm water and pat them dry with a soft cloth. Do not use kitchen or microfiber towels, as fine dust particles can mechanically damage the crystal surface. It is strictly forbidden to use detergents for windows and mirrors.



### PORCELAIN HANDLES

Each decorative operating handle is moulded separately from high-quality porcelain and then glazed. The Fürstenberg porcelain manufacturer confirms the origin with the gold emblem on each handle. The relief of the porcelain handle is emphasized by hand-painted contours made of 24 carat gold or platinum. Clean the porcelain with a mild detergent diluted in lukewarm water. Do not use kitchen or microfiber towels, as fine dust particles can mechanically damage the porcelain surface. Rinse the porcelain thoroughly with water and pat dry with a soft cloth.

## Limited Warranty

---

NOTICE – NO WARRANTY ON THE FOLLOWING FINISHES: Bronze, Mink, Mink matt, Sunshine, Sunshine Matt and all Gold finishes.

### **Jörger's Promise**

Jörger will provide free of charge, at its options, replacement part(s) or product (or a comparable alternative product) to replace those which have proven defective in materials or workmanship.

Jörger will not assume liability for labor expended, freight cost or damages accruing from the use of the material purchased from us. If material is defective, the limit of damage is the price of the defective material. Proof of purchase (original sales receipt) from the original consumer purchaser must be made available to Jörger for all warranty claims. The warranty is not transferable and is extended solely to the original purchaser of the product.

### **Warranty Exclusion:**

This warranty is for normal domestic use only and excludes defect or injury caused by or resulting from misuse, abuse, neglect, accidental damage, improper installation or normal wear and tear. As a special note, avoid all cleaning products that contain ammonia, bleach, and alcohol. They may damage the finish.

### **General Disclaimer:**

Jörger does not have field service technicians. We are a sales and marketing company only. Due to liability issues, Sales Representatives do not perform in-home service. Product that is handmade and is within tolerance of published dimensions will not be considered for return.

All warranties other than the Express Warranty herein contained, including but not limited to any implied warranty of merchantability or fitness for a particular purpose, are limited in duration to the applicable warranty period set forth above.

Some states do not allow limitations on how long an implied warranty lasts and some states do not allow the exclusion or limitation of incidental or consequential damages, so the above limitations or exclusions may not apply to you.

This warranty gives you specific legal rights and you may also have other rights that vary from state to state.

---

### Foreign Outlets Online:

One of the benefits of the Internet is that it has granted consumers the opportunity to learn about and purchase products from previously unknown foreign companies. Unfortunately, some foreign distributors who sell the foreign versions of Jörger's products have promoted these products for shipment to the United States.

Though prices may look appealing, these products are not designed to be installed in American homes and significant problems may result. Jörger ensures that its products meet American plumbing installation standards and have American plumbing code approvals. Jörger will not service, warrant, nor provide customer support for product purchased from foreign distributors.

### Commercial Warranty:

Jörger warrants its products installed in a commercial application to be free from manufacturing defects for a period of one (1) year from the date of acquisition by original owner.

### Outside Use:

Jörger products are suitable for outside use. However, due to the harsh environment of sun, wind, rain and snow, we do not offer a warranty for these types of installations.

**Please contact the Jörger retailer or showroom where you purchased this product for all warranty related claims.**

### IMPRINT

Editor: Jörger Armaturen- und Accessoiresfabrik GmbH, Mannheim  
Art Direction / Graphic Design: Oliver M. Jörger  
Photography: belyan.design.studio, i.a.  
Text: Angelika Böhm

© Copyright: Jörger Armaturen- und Accessoiresfabrik GmbH, Mannheim (Germany) / 06/2024

Reproduction or duplication of any part of this catalogue, in any manner, is authorised only with our permission.  
Dimensions and colours are subject to usual allowance.  
Models and technical details shown are final. We reserve the right to technical improvements and/or changes. Subject to printing errors.



Follow us on

Instagram



Follow us on

LinkedIn



JÖRGER ARMATUREN- UND ACCESSOIRESFABRIK GMBH

Seckenheimer Landstraße 270-280 | 68163 Mannheim / Germany | Telefon: +49 621 41097-01 | E-Mail: [export@joerger.de](mailto:export@joerger.de)

[WWW.JOERGER.DE/US](http://WWW.JOERGER.DE/US)