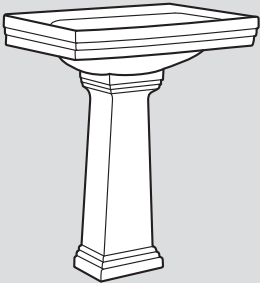
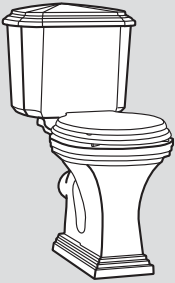
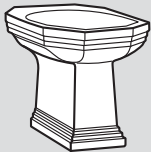


# SCALA II

			.100 weiß white	.190 mahagoni mahogany	A .000 chrom chrome	D   F .040 edelmessing sunshine	I .020 gold gold
	133.50.010	Waschtisch 64 x 48 cm, für 1-Loch	■				
	133.50.030	für 3-Loch	■				
	133.55.000	Standsäule für Waschtisch 64 cm	■				
	133.52.010	Handwaschbecken für 1-Loch	■				
	133.52.030	52 x 41 cm für 3-Loch	■				
	199.50.000	Befestigungsset für Waschtisch u. Handwaschbecken			■		
	133.66.000	Tiefspülklosett zu Klosettkombination Abgang innen senkrecht	■				
	133.67.000	Tiefspülklosett zu Klosettkombination Abgang außen waagrecht	■				
	133.68.000	Spülkasten zu Klosettkombination Zulauf seitlich, ohne Innengarnitur <i>benötigt</i>	■				
	199.63.006	Innengarnitur mit Druckknopf und STOP-Einrichtung			■	■	■
	112.75.000	Klosettsitz mit Deckel zu Abgang IS, ohne Scharniere <i>benötigt</i>	■	■			
	199.75.002	Satz Scharniere zu Klosettsitz 103.75.000			■	■	■
	199.69.002	Befestigungsset für Tiefspülklosett			■	■	■
	133.80.010	Stand-Bidet für 1-Loch	■				
	199.69.002	Befestigungsset für Bidet			■	■	■

# SCALA II

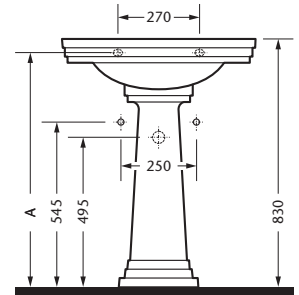
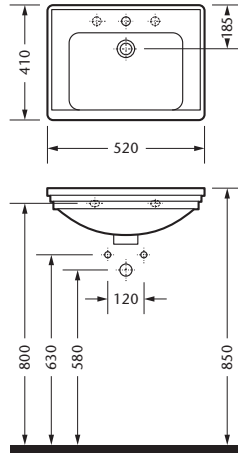
<b>A</b> chrom   chrome	[.000]	<b>I</b> platin matt   platinum mat	[.066]
<b>D</b> nerz   milk	[.095]	<b>I</b> bronze   bronze	[.011]
<b>D</b> edelmessing   sunshine	[.040]	<b>I</b> gold   gold	[.020]
<b>F</b> edelmess.matt   sunshine mat	[.041]	<b>I</b> weiss   white	[.050]
<b>F</b> platin   platinum	[.065]		

**Washbasin 64 x 48 cm,** for 1-hole  
for 3-hole

**Pedestal**  
for washbasin 64 cm

**Mini washbasin 52 x 41 cm,** for 1-hole  
for 3-hole

**Fixing set**  
for washbasins



Maß A muß vor Ort ermittelt werden.

**Close coupled w.c. pan**  
floor outlet

**Close coupled w.c. pan**  
wall outlet

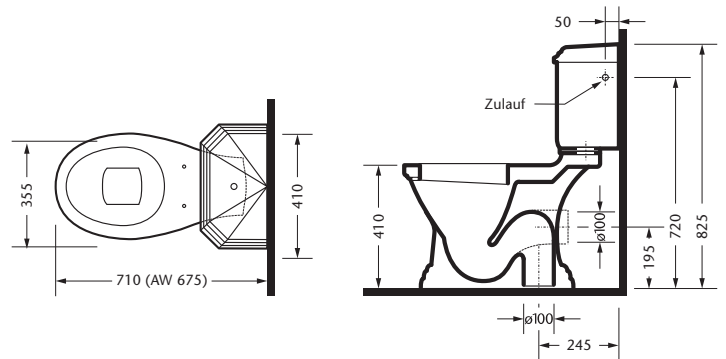
**Cistern, for close coupled w.c.**  
lateral inlet, without mechanism *required*

**Mechanism**  
with push button and STOP-unit

**Toilet seat**  
with lid, without hinges *required*

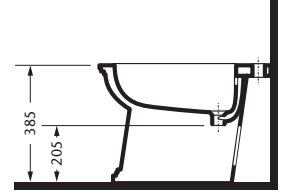
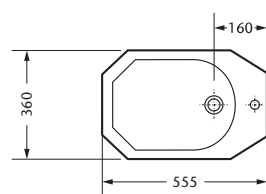
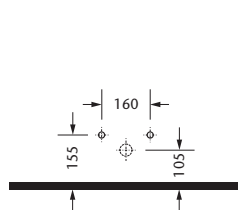
**Set of hinges**  
for toilet seat

**Fixing set**  
for w.c. pan



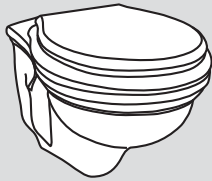


**Bidet**  
for 1-hole

**Fixing set**  
for bidet



Bitte Tassensiphon verwenden.

# SCALA II

				A	D	F	I
		.100 weiß white	.190 mahagoni mahogany	.000 chrom chrome	.040 edelmessing sunshine	.065 platin platinum	.020 gold gold
	<b>133.64.000 Wand-Tiefspülklosett</b>	■					
	<b>133.74.000 Klosettsitz</b> mit Deckel, ohne Scharniere <i>benötigt</i>	■	■				
	<b>199.74.012 Satz Scharniere</b> zu Klosettsitz			■	■	■	■
	<b>133.84.000 Wand-Bidet</b> für 1-Loch	■					
	<b>133.61.000 Tiefspülklosett</b> Abgang außen waagrecht	■					
	<b>112.75.000 Klosettsitz</b> mit Deckel, ohne Scharniere <i>benötigt</i>	■	■				
	<b>199.75.002 Satz Scharniere</b> zu Klosettsitz			■	■	■	■
	<b>199.69.002 Befestigungsset</b> für Tiefspülklosett			■	■	■	■
	<b>133.65.000 Spülkasten, hochhängend</b> Zulauf seitlich, ohne Innengarnitur <i>benötigt</i>	■					
	<b>199.63.017 Innengarnitur</b> zu Spülkasten, hochhängend <i>benötigt</i>			■			
	<b>199.63.026 Rohr zu Spülkasten, hochhängend</b> mit Befestigungsring, Dichtung und Zugkette			■	■	■	■
<i>benötigt</i>						.050 weiß white	
<b>199.63.025 Aufhängekonsole</b> zu Spülkasten						■	

# SCALA II

A chrom   chrome	[.000]
D nerz   milk	[.095]
D edelmessing   sunshine	[.040]
F edelmess.matt   sunshine mat	[.041]
F platin   platinum	[.065]

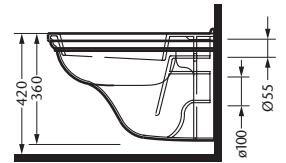
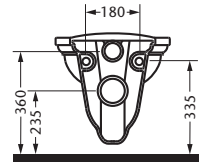
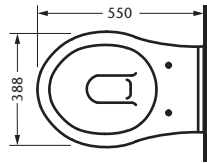
I platin matt   platinum mat	[.066]
I bronze   bronze	[.011]
I gold   gold	[.020]
I weiss   white	[.050]

## W.C. pan, suspended

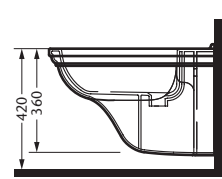
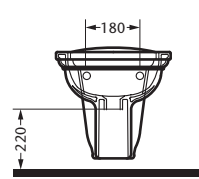
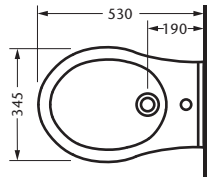
**Toilet seat**  
with lid, without hinges

required

**Set of hinges**  
for toilet seat



## Bidet, suspended for 1-hole



## W.C. pan wall outlet

**Toilet seat**  
with lid, without hinges

required

**Set of hinges**  
for toilet seat

**Fixing set**  
for w.c. pan

**Cistern, high level**  
lateral inlet, without mechanism

required

**Mechanism with chain**  
for high level cistern

required

**Pipe for high level cistern**  
with fixing ring and gasket

required

**Fixing console, white**  
for high level cistern

